

The OrthoSave® Comp provides controlled iceless compression therapy for the reduction of swelling and pain. In addition, the OrthoSave® DVT offers mobile, mechanical blood clot prevention. With certain conditions where a physician prescribes heat or contrast therapy, OrthoSave® Comp also delivers great outcomes.

YOUR DAILY PRESCRIPTION (default prescription in parentheses below)

Use for _____ (30) minutes with 1 hour off between sessions _____ (3-5) times per day.

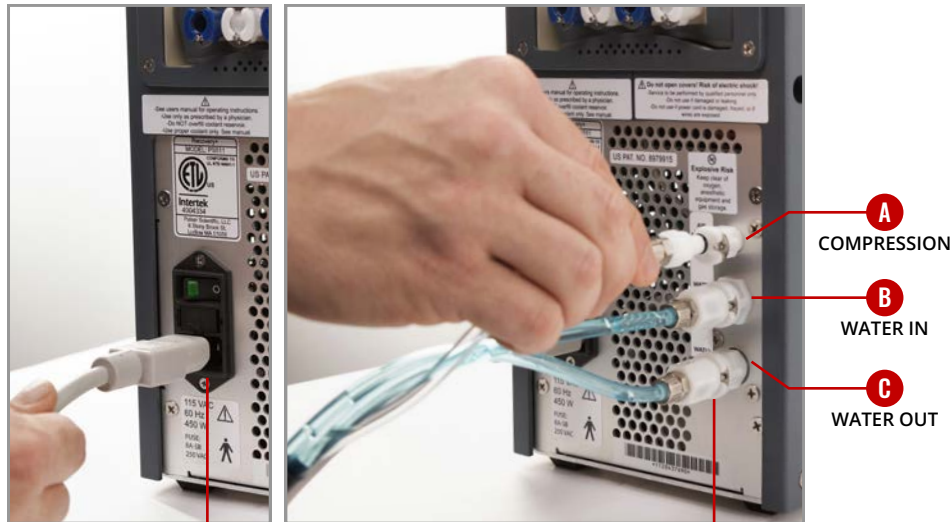
1 WHAT'S IN THE BOX?

- OrthoSave® Comp
- Power cord
- Cold & compression wrap
- Distilled water
- OrthoSave® DVT
- Umbilical hose
- DVT wraps (if applicable)
- UPS return label

*Note: The machine color may be beige or dark grey

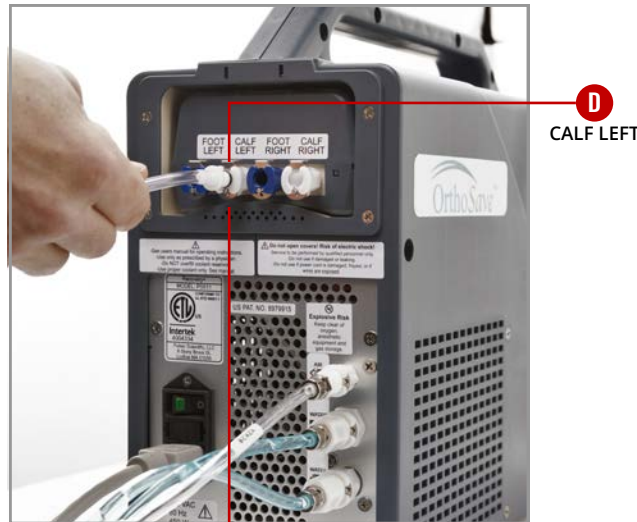
2 INITIAL SET-UP

ORTHO SAVE® COMP



- STEP 1** Plug in power cord
- STEP 2** Connect umbilical hose lines to **A COMPRESSION**, **B WATER IN** and **C WATER OUT**

ORTHO SAVE® DVT



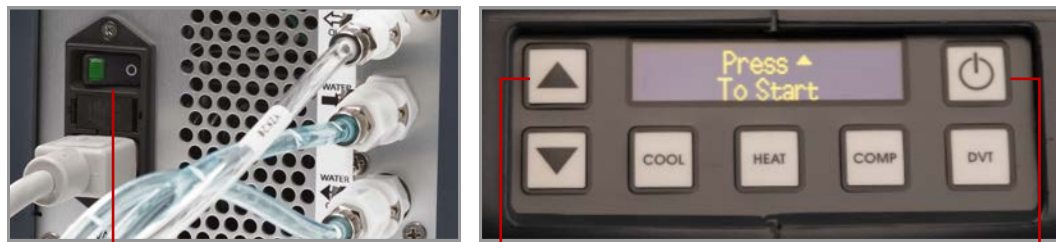
- STEP 3** Connect a *single DVT wrap* to **D CALF LEFT**

COMPLETED SET UP



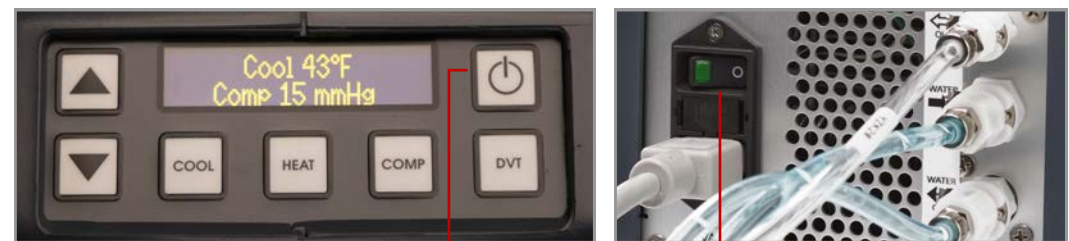
3 STARTING THERAPY

- STEP 1** Apply all wraps prescribed by your physician.



- STEP 2** Flip the switch *on* at the back of the machine.
- STEP 4** Press button to start therapy.
- STEP 3** Hold button down until screen *turns on*.

4 STOPPING THERAPY



- STEP 1** Hold button down until screen *turns off*.
- STEP 2** *Flip the switch *off* at the back of the machine.
**Important: Do not switch off in the back before turning off the front of the unit*



WATCH STEPS **2 3 AND 4** ONLINE
 Scan this code with your smartphone to watch a video demonstrating the steps above.

5 APPLICATION OF BEHIND THE KNEE ALTERNATE COLD COMPRESSION & DVT WRAPS

STEP 1 Place single DVT wrap around opposite calf of surgical leg, hose going down towards foot.

STEP 2 Connect umbilical hose to cold compression wrap.

STEP 3 If placed in cast or splint: Place small knee wrap behind your knee and velcro straps around leg.

COMPLETED BEHIND THE KNEE ALTERNATE SET UP



WATCH STEP 1 ONLINE

Scan this code with your smartphone to watch a video demonstrating the step above.



WATCH STEP 2 AND STEP 3 ONLINE

Scan this code with your smartphone to watch a video demonstrating the steps above.

6 TROUBLESHOOTING

MACHINE / SYMPTOM	POSSIBLE SOLUTION(S)
ORTHO SAVE® DVT The OrthoSave® is beeping, but <i>shows no error code</i> on the display screen.	a. Remove DVT unit by pressing black plastic release button on the corner of the unit. b. Shut DVT unit off then back on to reset. c. Check connections and make sure they are plugged into the DVT ports. d. Check for pinched wrap air lines. e. Make sure DVT wraps are placed on the outer side of the calf with the clear tubes facing the outer side of leg/ankle.
ORTHO SAVE® COMP The OrthoSave® is beeping and <i>shows an error code</i> on the display screen. Fault codes will appear.	a. Fault code "2060": Low liquid in reservoir or hose not completely connected to wrap. <ul style="list-style-type: none"> ▪ Shut comp unit off then turn back on to reset. Check line connections, if not connected you will hear/feel snap. ▪ How to refill the liquid reservoir when low: <ol style="list-style-type: none"> 1. Start the OrthoSave® Comp. 2. Remove cap from the top of the machine and begin refilling the machine with distilled water while the unit is running until the reservoir is full. 3. Once fill line is full, screw cap back to the top of the OrthoSave® Comp. b. Call your Sales Service Rep for any additional questions.

7 RETURNING THE ORTHO SAVE®



STEP 1 Place the UPS return label on the box, covering any previous shipping labels.

STEP 2 Disconnect all hoses from the OrthoSave® Comp.

STEP 3 Throw away all wraps and pads in a trash can.

STEP 4 Place the machine, power cord, and umbilical hose in the box for return.
(Note the separate compartments for the OrthoSave® machine, power cord and umbilical hose)

STEP 5 Tape the box up so the machine is secure.

STEP 6 Connect with your Sales Service Rep and have them schedule UPS to pickup the equipment.



WATCH HOW TO RETURN THE ORTHO SAVE®

Scan this code with your smartphone to watch a video demonstrating on how to safely pack and return the OrthoSave®.